

Configuration Worksheet

1. Select Series Type:

- D800 Configuration Worksheet D1000 Configuration Worksheet

2. Select Connection Type:

- 30 LT 45LT #3/#4 Sprague #5 Sprague

3. Maximum Flow Rate for Testing (Qmax):

- 800 CFH 1000 CFH 1700 CFH

4. Select Test Points:

Number of prover test points _____

Flow rates or % of Qmax for each test point _____

5. Differential Test Plugs:

- Yes No

6. Meter Manufacturers Badge Color:

- Black Red

7. Traditional Brass Badge (Top Lip of Housing):

- Yes No

8. Front Badge:

- Yes No

If yes, then specify color: Black Red

Information required on badge: _____

9. Customer Supplied Badges/Barcodes required?

- Yes No

If yes, you must contact factory to discuss options.

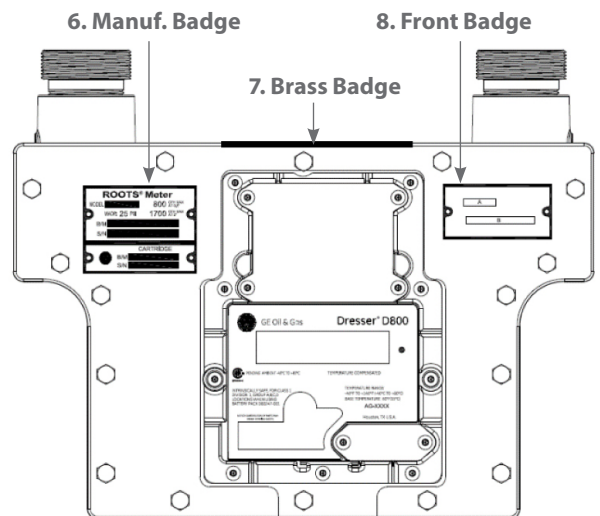
10. Will Dresser install AMR Device?

- Yes No

If yes, please indicate Model and Manufacturer: _____

11. Select Software Configuration type:

- Default (Temperature Compensated – please refer to next page for full default configuration settings)
 Custom



D800/D1000 Default Configuration

Temperature Compensation:

Temperature Compensated	True
-------------------------	------

Volume Configuration:

Meter Volume Units	cf
Flow Sense*	Forward + Reverse
Compensated Multiplier (x1, x10, x100)	x 100 (x 1m ³ Metric)
Non-compensated Multiplier (x1, x10, x100)	x 100 (x 1m ³ Metric)
Compensated Number of Digits (5-8)	5
Non-compensated Number of Digits (5-8)	5
Number of Digits after dec. point	0 (Configurable for Metric only)
Pulse Output 1 Setting (Comp/Non-comp/Fault/Disabled)	Compensated
Pulse Output 1 Volume	x 10
Pulse Output 2 Setting (Comp/Non-comp/Fault/Disabled)	Non-compensated
Pulse Output 2 Volume	x 10
Pulse1/Pulse2 Pulse Width (50 ms/150 ms/250 ms)	150 ms
Pulse Output 3 Setting (Fault/Disabled)	Disabled
Fault Signal Pulse Output - AMR only (Continuous/Latched)	Continuous Pulse (every 30 seconds)

Compensation Configuration:

Temperature Units	°F
Base Temperature	60
Temperature Mode	Live
Fixed Temperature (under fault)	60
Pressure Units (psi/kPa)	psi
Base Pressure	14.73
Atmospheric Pressure	14.73
Fixed Pressure Reference (Gauge/Absolute)	Gauge Mode
Fixed Line Pressure	0
Fixed Pressure Factor	1

Alarm Settings

High Temperature Limit	140
Low Temperature Limit	-40
Use Fixed Temp. Under Fault Status	True
High Temperature Alarm	True
Low Temperature Alarm	True
High Flow Alarm	True
Volume Input Alarm	True
Low Battery Alarm	True – not configurable

Leak Test Parameters:

Leak Test Time	00:01
Flow Rate/Hour	2
Maximum Leak Volume	0.03333334

*Flow Sense Direction Options: Forward-Reverse, Reverse-Forward, Reverse, Forward, Forward+Reverse

**Required for prover testing meter with IR interface.

Dresser Meters & Instruments

16240 Port Northwest Drive
Houston, TX 77041
T: 1-800-521-1114
F: 1-800-335-5224



The Dresser Logo and all Trademarks containing the term "Dresser" are the property of Dresser, LLC, a subsidiary of Baker Hughes, a GE Company.

Dresser D800/D1000 Configuration Sheet NGS.MI.0065

12.18